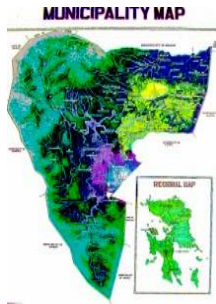




Republic of the Philippines  
 Province of Leyte  
 Burauen  
 \*\*\*



**OFFICE OF THE MUNICIPAL ASSESSOR**

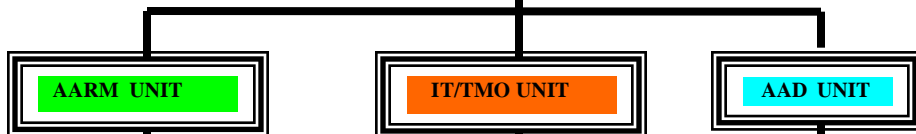
**ORGANIZATIONAL CHART**



**HON. JUANITO E. RENOMERON**  
 Local Chief Executive



**ENGR. RAQUELITO S. MANDREZA, REA, MPA**  
 Municipal Assessor  
 E-mail add: [raquelmandreza@yahoo.com](mailto:raquelmandreza@yahoo.com)



**Joe Helen P. Amat**  
 Asst. Aide/Verifier



**Quincy M. Sintasas**  
 IT Encoder/Asst.Aide



**Joseph M. Nuevas**  
 Appraisal Aide/Verifier



**TAX MAPPER STAFF**  
 Standing : Gian Carlo M. Renomeron, Sherwin E. Baron, Jay-ar Y. Del Pilar  
 Seating : Melvin C. Capangpangan, Gudyfel E. Tajala, Marifil P. Timtiman